



Transport Solutions



EBW Transport Systems Commitment to Quality

EBW Transport Systems is committed to providing the highest quality Transport System solutions in the world. This commitment will be second to none in petroleum transport component manufacturing.

EBW Transport Systems commitment to quality does not stop at the loading rack or at the service station. EBW Transport Systems commitment to quality is with you and your equipment twenty-four hours a day.

EBW Transport Solutions

Application Index



**Bottom Loading
Adaptors.....Page 2-3**



**Hose Tube
Door.....Page 14**



**Air Interlock
Valves.....Page 4-6**



Petro-Dial.....Page 14



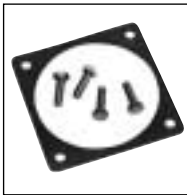
**Gravity Drop
Adaptors.....Page 7-8**



**Product Drop
Elbows.....Page 15-18**



**Vapor Check
Valves.....Page 9-10**



Attachments.....Page 19-20



Vapor Caps.....Page 11



**Emergency
Valves.....Page 21-24**



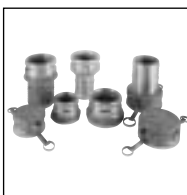
**Vapor Return Hose
Couplers.....Page 12**



**Speciality
Items.....Page 25-26**



**Air Operated
Sequential Vapor
Valves.....Page 13**



**Cam and Groove
Adaptors.....Page 27**

API Bottom Loading Adaptors

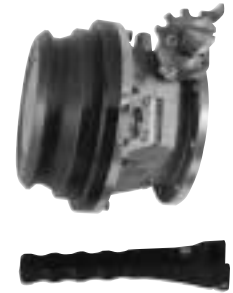
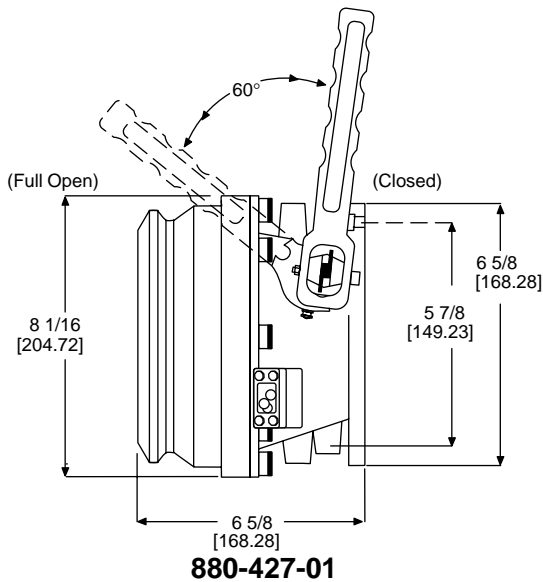
Loading and off-loading are easier than ever with EBW's bottom loading adaptor. While loading, a free float poppet design keeps the handle in the closed position as long as the poppet is activated. During off-loading, the handle's two open positions adjust the flow rate. The lightweight, heavy-duty adaptor is engineered and tested to meet API RP 1004 specifications. The outer end is hard-coated aluminum

and rotates to prevent uneven wear sometimes caused by terminal and off-loading couplings. Compatible with all API dry disconnect couplers. The adaptor is constructed with a standard TTMA 4-inch tank truck flange and mounting lugs for EBW Air Interlock Valve. Most dimensions for Canadian versions are the same as the line drawings shown.

Features

- Heat-treated, aluminum alloy body and flange
- Hard-coated aluminum API adaptor end
- Stainless steel poppet, shaft, and latch plate
- Aluminum bronze cam
- Glass-filled nylon handle
- Fluorocarbon seals
- Meets API RP 1004 specifications
- TTMA Standards

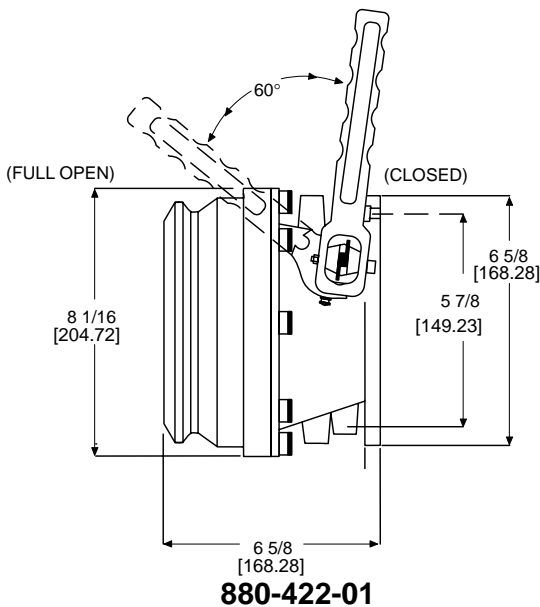
Flow Indicator Gives visual indication of product in the line



880-427-02 with removable handle. Available in Brass or Nylon

Part No.	Type	In.	mm.	Lbs.	Kg.
880-427-01	Standard	4.00	101.6	11.69	5.30
880-427-02	Canadian	4.00	101.6	11.69	5.30

Short Stroke Quick closing two position handle

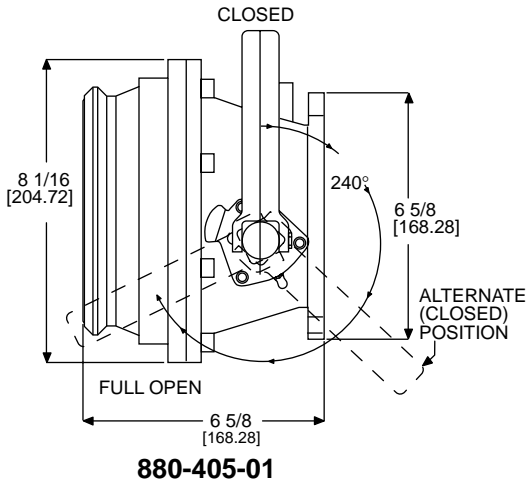


880-422-02 with removable handle. Available in Brass or Nylon

Part No.	Type	In.	mm.	Lbs.	Kg.
880-422-01	Standard	4.00	101.6	11.69	5.30
880-422-02	Canadian	4.00	101.6	11.69	5.30

API Bottom Loading Adaptors

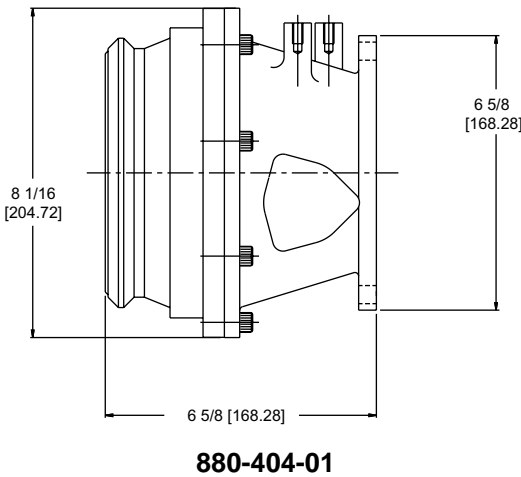
Rack & Pinion Operated Open in three positions



880-405-02 with removable Brass handle.

Part No.	Type	in.	mm.	Lbs.	Kg.
880-405-01	Standard	4.00	101.6	11.50	5.22
880-405-02	Canadian	4.00	101.6	11.50	5.22

Loading Only Faster Fueling



Part No.	Type	In.	mm.	Lbs.	Kg.
880-404-01	Standard	4.00	101.6	11.00	4.99

Dust Cap Corrosion resistant

This lightweight, API Dust Cap shields valuable bottom loading valves from destructive outside elements. The cap easily couples on all EBW valves and API bottom loading adaptors using a reliable Buna-N gasket. The corrosion-resistant cap comes with forged brass cam arms and a heavy-duty attachment chain.



Feature

- Meets API RP1004 Specifications

Part No.	Description	In.	mm.	Lbs.	Kg.
880-403-01	Dust Cap	4.00	101.6	3.06	1.39
880-206-01	Gasket	4.00	101.6	-	-

Air Interlock Valves

Play it safe with this lightweight valve that locks up the brakes on the trailer, preventing it from leaving the loading rack while connected to the loading arm. This three-way air valve can be used normally open or normally closed, has an adjustable stem, and comes with standardized TTMA and API mounting holes. The anodized

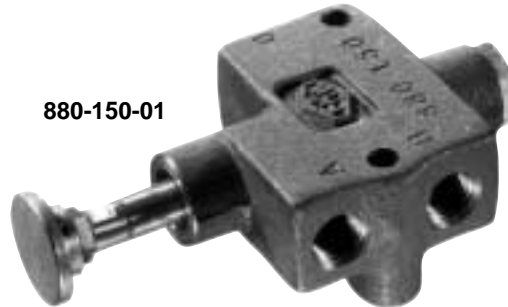
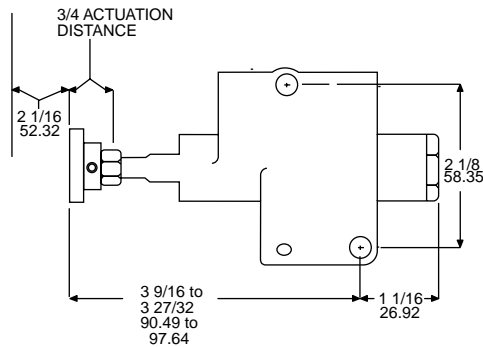
aluminum valve is used on all API bottom loading adaptors and all Vapor Check Valves.

- 1/4" NPT Connection Ports
- Field Serviceable
- Adjustable Stem Button

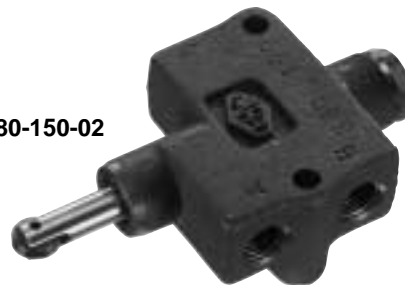
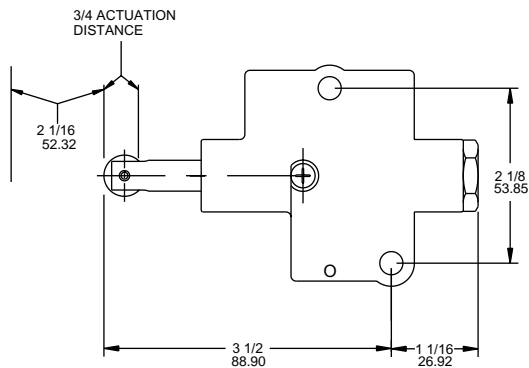
Features

- Heat-treated, anodized aluminum construction

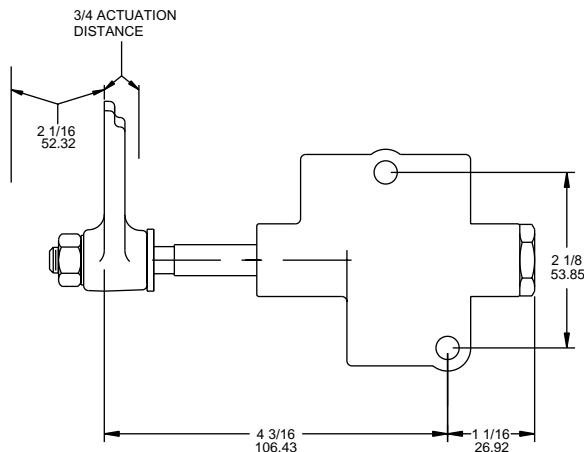
Three-way air valve



880-150-01



880-150-02



880-150-03

Part No.	Width		Length		Lbs.	Kg.
	In.	mm	in.	mm.		
880-150-01	3.00	76.2	4.25	107.95	0.69	.31
90012 Service Kit for 880-150-01						
880-150-02	3.00	101.6	4.25	107.95	0.69	.31
90055 Service Kit for 880-150-02						
880-150-03	3.00	101.6	4.25	107.95	0.69	.31
90056 Service Kit for 880-150-03						

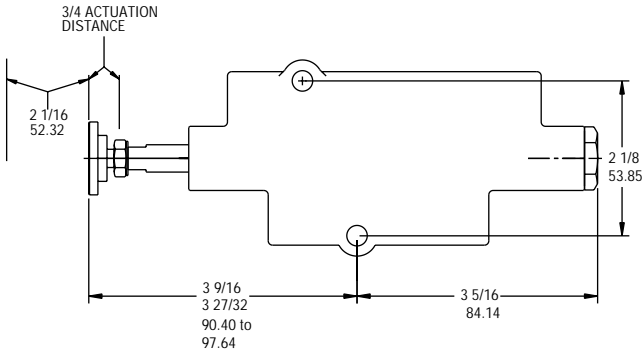
Six-way air valve

This air interlock valve was designed to operate two different air systems at the same time. The new lightweight valve is designed to lock the trailer brakes and open the air operated vapor valve at the same time. This six-way air valve can be used in the normally open

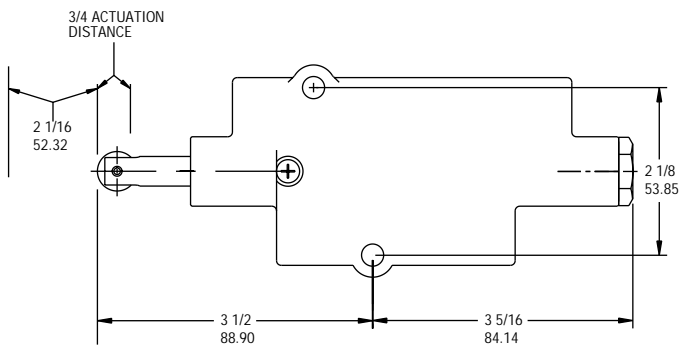
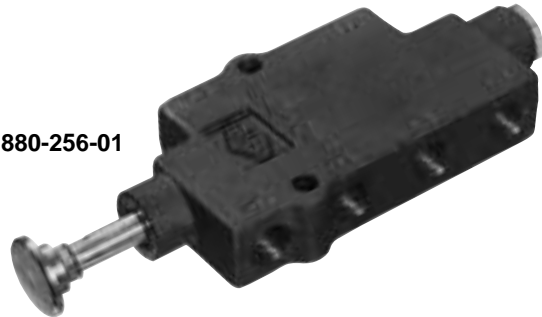
(N/O) and normally closed (N/C) configurations of N/O, N/C or N/O, N/O or N/C, N/C positions. It has an adjustable stem, and comes standard with TTMA and API mounting holes.

Features

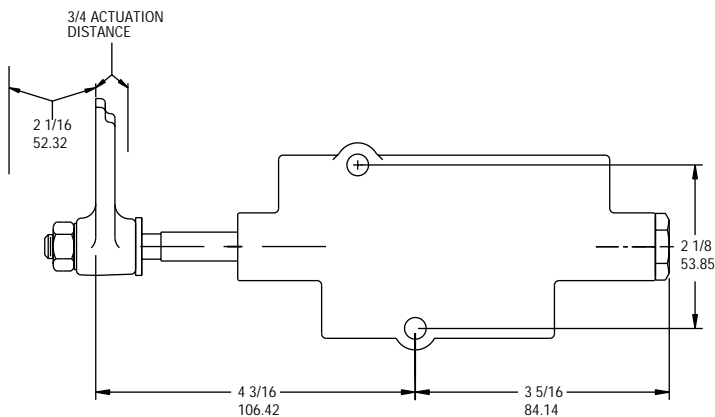
- Heat treated, anodized aluminum construction
- Adjustable Stem Button
- 1/4" NPT Connection Ports
- Field Serviceable



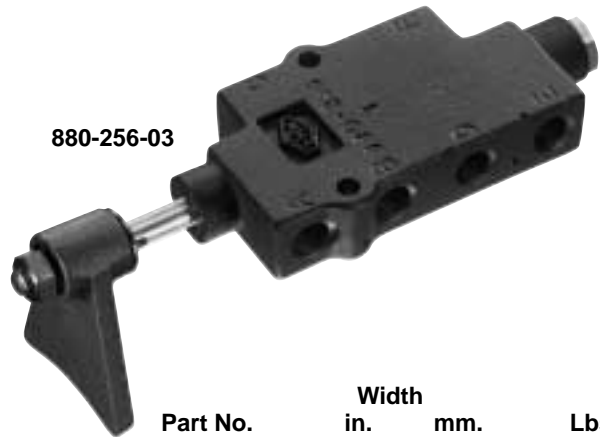
880-256-01



880-256-02



880-256-03



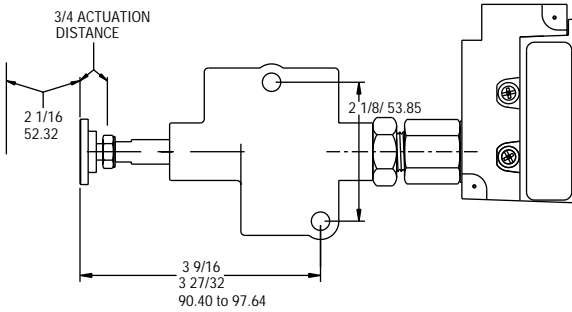
Part No.	Width		Lbs.	Kg.
	in.	mm.		
880-256-01	3.00	72.6	0.69	.31
90020	Service Kit for 880-256-01			
880-256-02	3.00	72.6	0.69	.31
90057	Service Kit for 880-256-02			
880-256-03	3.00	72.6	0.69	.31
90059	Service Kit for 880-256-03			

Air Interlock with Limit Switch

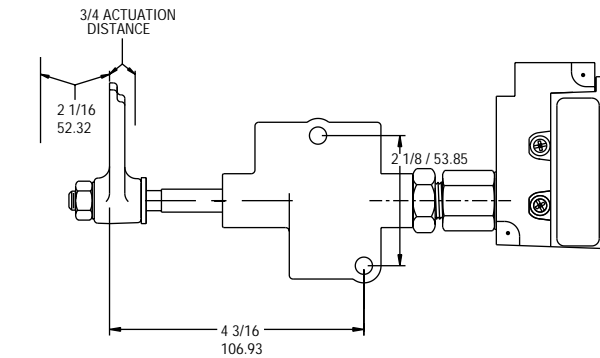
Ensure proper vapor recovery every time by using EBW's Air Interlock with Limit Switch. With the limit switch, bottom loading cannot begin until a vapor recovery hose is connected to the vapor check valve. The switch does its job by breaking a connection in the secondary over-fill

prevention system, thus preventing the rack monitor from giving a green light to the transport. Once a vapor line is connected, loading can begin. The coupler first depresses the plunger button of the interlock, which then locks the trailer brake system and completes the connection to the

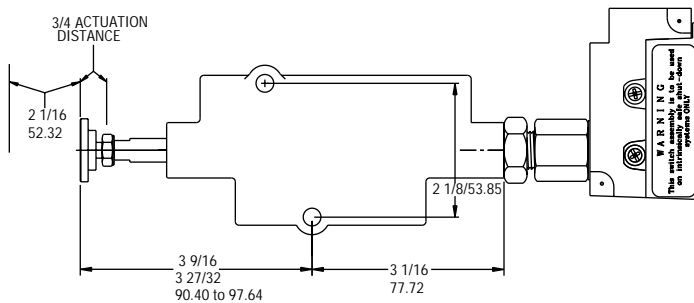
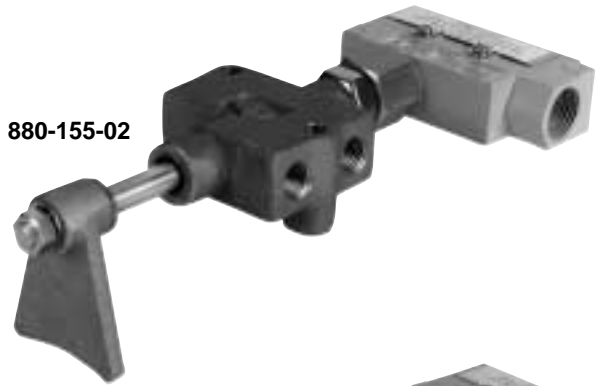
rack monitor. The vapor hose must be disconnected before the brakes will release, allowing the truck to be driven away. The Air Interlock with Limit Switch is used on EBW's Vapor Check Valves without needing a larger plunger button.



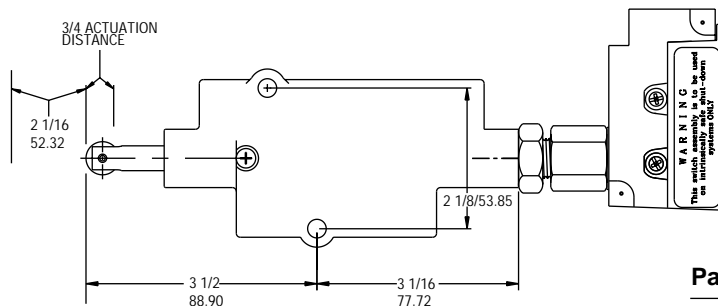
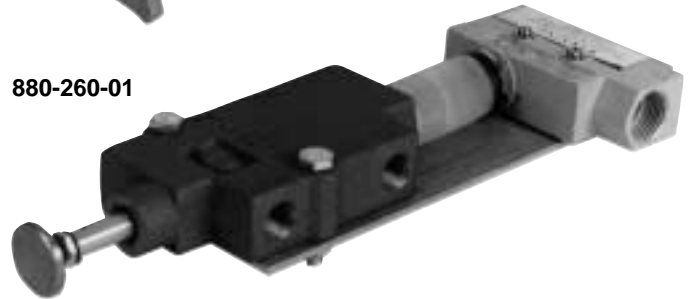
880-155-01



880-155-02



880-260-01



880-260-02



Part No.	Description	Lbs.	Kg.
880-155-01	1/4" - 1" button with Limit switch	1.25	.57
880-155-02	1/4" roller tip with Limit switch	1.25	.57
880-260-01	1/4" six way with Limit switch	1.9	.86
880-260-02	1/4" six way with roller tip	1.9	.86
880-160-01	Limit switch Kit		

Gravity Drop Adaptors

Let gravity do all the work with these high strength, corrosion-resistant adaptors.

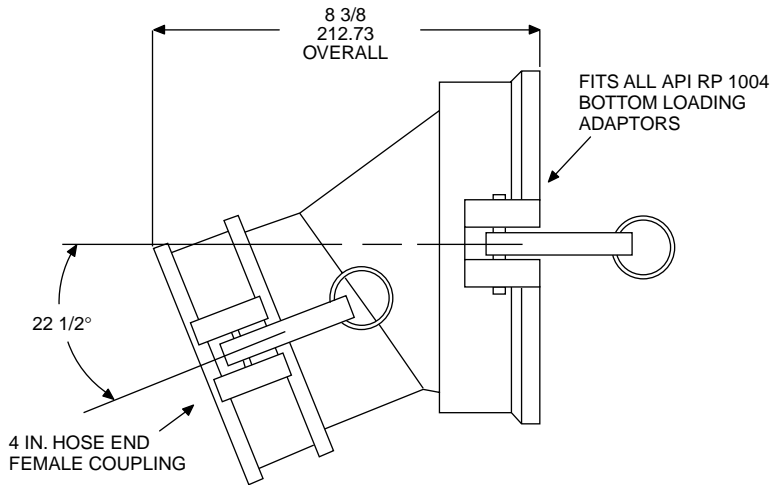
A 22 1/2-degree angle makes service station drops a breeze with easy hose coupling and fast, unrestricted off-loading. Engineered to mate with API RP 1004 Bottom Loading Adaptors, each adaptor comes with a heavy-duty attachment chain and uses a large,

resilient gasket that guarantees minimum product loss. The lightweight adaptors are available in 3" male NPT or male cam and groove; 4" male NPT, male cam and groove or female cam and groove.

Features

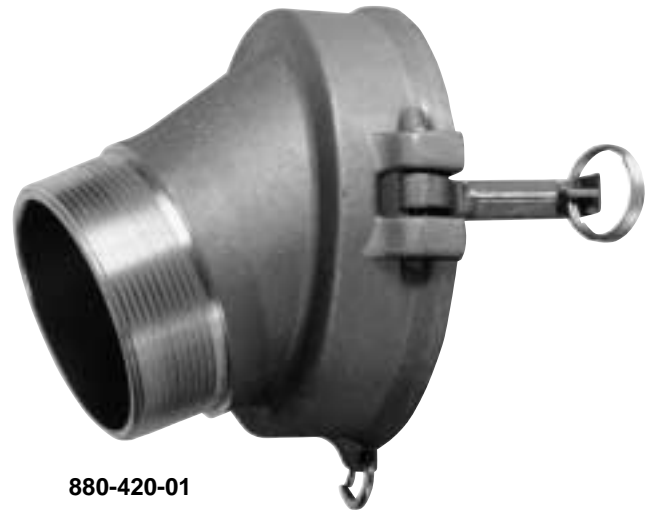
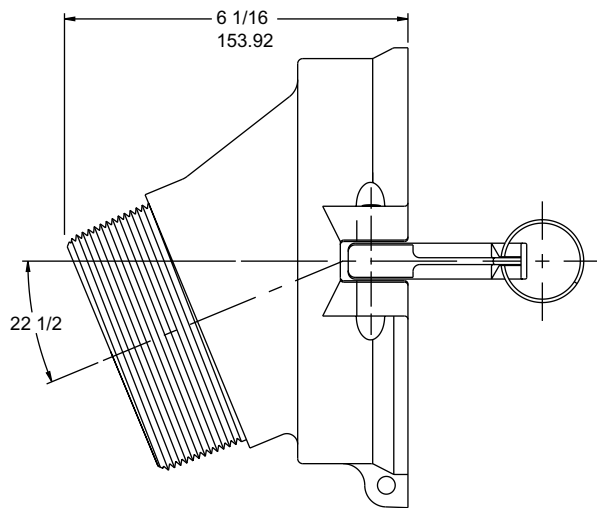
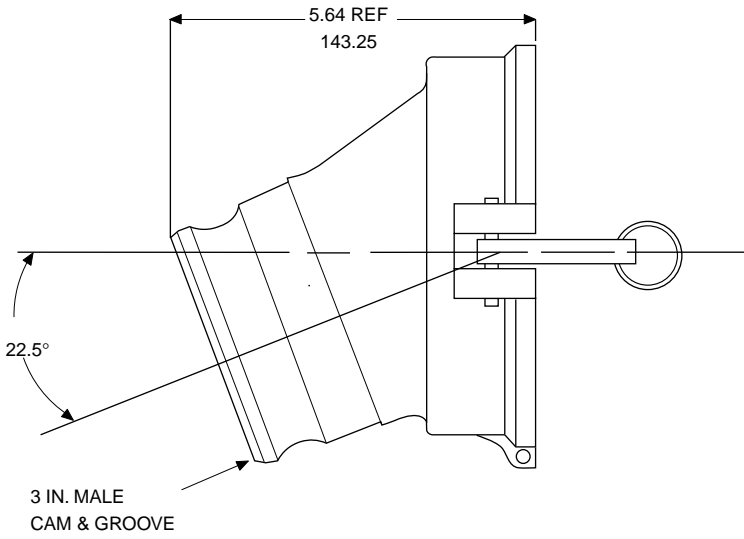
- * Heat-treated, aluminum alloy body
- * Buna-N gaskets
- * Forged bronze cams and stainless steel pins
- * Meets API RP 1004 specifications

Female gravity drop adaptor



Part No.	Description	Size		Lbs.	Kg.
		In.	mm.		
880-330-01	Female	4.00	101.6	6.06	2.75
880-206-01	Gasket - API end	4.00	101.6	-	-
774-202-04	Gasket - hose end	4.00	101.6	-	-

Male gravity drop adaptor



Part No.	Description	Size		Lbs.	Kg.
		in.	mm.		
880-410-01	Male cam and groove	3.00	76.2	4.00	1.81
880-411-01	Male cam and groove	4.00	101.6	5.00	2.27
880-420-01	Male - NPT thread	3.00	76.2	4.00	1.81
880-420-21	Male - BSPT thread	3.00	76.2	4.00	1.81
880-421-01	Male - NPT thread	4.00	101.6	4.31	1.96
880-421-21	Male - BSPT thread	4.00	101.6	4.31	1.96
880-206-01	Gasket - API end				

Vapor Check Valves

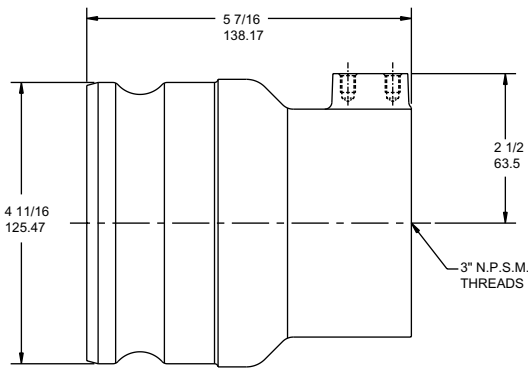
Use this Vapor Check Valve to return vapor to the truck during terminal loading and service station drops. The 3-inch poppet opens when coupled and closes when disconnected, preventing the vapors from escaping into the atmosphere. The valve has 3- or 4-inch female NPSM threads, a 4-

inch cam and groove, and tapped mounting holes for EBW's Air Interlock Brake. The 303 series is available without a poppet to serve as a male quick coupler with an Air Interlock Valve mounting pad.

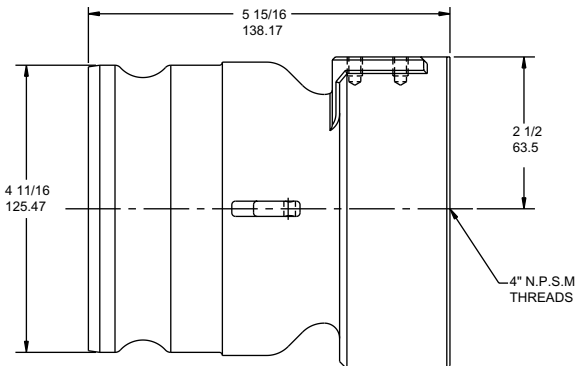
Features

- Anodized aluminum construction
- Stainless steel stem and spring
- Buna-N gasket
- Aluminum guide

Threaded Vapor Check Valve



301-300-02



303-444-04

Part No.	Poppet	Thread Size	Lbs.	Kg.
301-300-01	yes	3.00-NPSM	4.50	2.04
301-300-02	yes	4.00-NPSM	4.81	2.18
301-300-03	yes	3.00-BSP	4.50	2.04
303-333-03	no	3.00-NPSM	3.81	1.73
303-444-04	no	4.00-NPSM	4.31	1.96

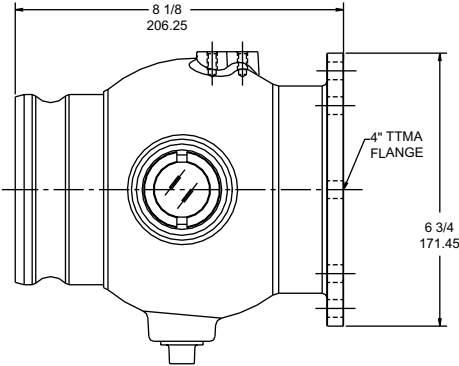
High Flow Flanged Vapor Check Valve

EBW's streamlined poppet design makes the New High Flow Recovery Adaptor unique in that it allows for higher flow rates than all competitive designs giving you faster loading and unloading. This unique adaptor also allows the loading of multiple compartments at over 1000 GPM.

The sight glasses give you a view of loading and unloading, and the drain plug enables you to correct an accidental overflow. EBW's design also decreases the chance of vapor loss because the vents are less likely to accidentally pop open due to compartment back pressure.

Features

- Allows the loading of multiple compartments
- Drain plug for draining of liquids
- Sight glasses for visual inspection of loading and unloading
- Decreases the chance of losing vapor into the atmosphere
- Heavy duty aluminum cast housing
- TTMA Flange for easy mounting
- Cam and groove for quick and secure hose connection



880-448-01

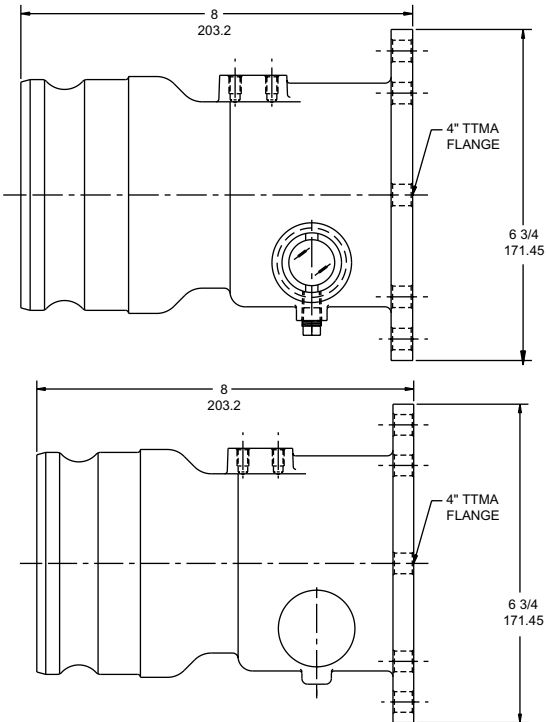
Part No.	Lbs.	Kg.
880-448-01	8.4	3.81

Flanged Vapor Check Valve

Stop overflow before it becomes a problem with this vapor recovery fitting featuring two sight glasses. This valuable feature lets the user see if an overflow condition exists at the terminal during loading or in the underground tank during a drop. The

sight glasses can also help detect liquid accumulation in the vapor manifold of a transport. A drain plug lets any extra fuel drain out, and the poppet prevents vapors from escaping when disconnected from the hose. A low pressure drop makes flow rates

faster and vapor recovery safer. The adaptor is constructed with a standard 4-inch TTMA flange, a 4-inch cam and groove, and a mounting pad for EBW's Air Interlock Valve.



302-300-01



302-300-02

Part No.	Description	Size		Lbs.	Kg.
		in.	mm.		
302-300-01	w/ sight glass	4.00	4.00	6.00	2.72
302-300-02	w/o sight glass	4.00	4.00	6.00	2.72

Vapor Return Hose Couplers

Fast, safe vapor recovery is easy with this probed hose coupler. Hose shank end bands to a vapor recovery hose and the probe automatically opens the poppet of the vapor check valve when coupled. The coupler comes in three sizes for use with most vapor check valves and hose configurations.

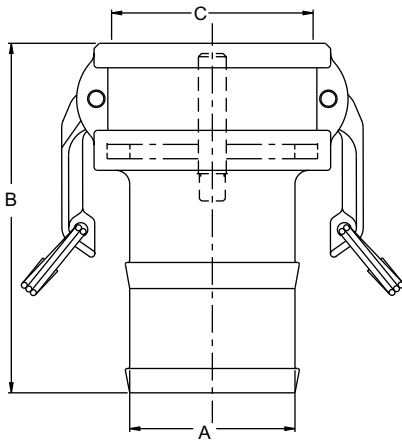
The poppetted vapor return hose coupler design prevents vapor from escaping when disconnected and the probe automatically opens the vapor check valve when connected properly. The design also offers low restrictive vapor passage. The body and probe are made of heat treated anodized

aluminum, with forged bronze cams, stainless steel pins, and the poppet has a replaceable fluorocarbon "O" ring.

Features

- Meets API RP1004 Standard

Fast, Safe Vapor Recovery



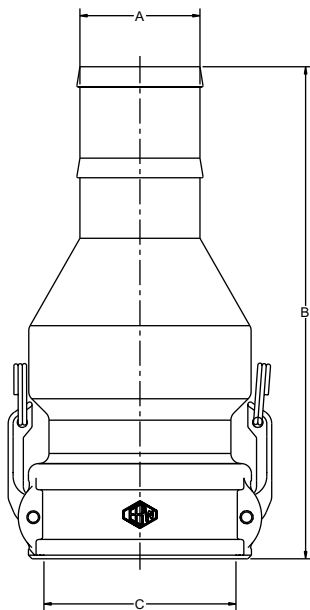
Features

- Heat-treated, aluminum alloy body and brass probe
- Forged bronze cams and stainless steel pins
- Used with probe for opening vapor check valve

Dimensions in chart are in inches/mm

Part No.	"A"	"B"	"C"	Lbs.	Kg.
774-320-01	3.00/76.2	6.28/159.51	3.62/91.95 (3" nominal.)	2.38	1.08
774-320-02	3.00/76.2	6.62/168.15	4.75/120.65 (3" nominal.)	3.00	1.36
774-320-03	4.00/101.6	6.62/168.15	4.75/120.65 (4" nominal.)	3.38	1.53

Poppetted Vapor Return Hose Coupler



Features

- Heat treated, anodized aluminum body and probe
- Poppetted dry break operation prevents vapors from escaping into the atmosphere when disconnected.
- Replaceable "O" ring
- Low restrictive vapor passage
- Forged bronze cams
- Stainless steel pins

Dimensions in chart are in inches/mm

Part No.	"A"	"B"	"C"	Lbs.	Kg.
774-350-01	3/76.2	12 3/16/309.63	4 3/4/120.65 (4" nominal.)	2.72	1.23
774-360-01	4/101.6	12 3/16/309.63	4 3/4/120.65 (4" nominal.)	2.85	1.29

Air-Operated Sequential Vapor Valves

Handle fuel vapors safely and efficiently with this lightweight aluminum vapor valve. The air-operated valve allows fast vapor flow during loading and unloading. The poppet is designed to open into the tank, preventing accidental leakage from product surges or from a tank truck rollover. Easy-to-use air line

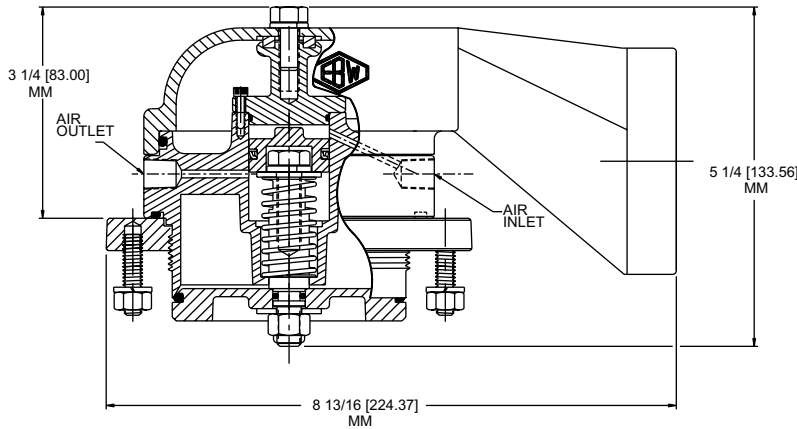
connections are located outside the compartment for convenient installation and maintenance. The 3.5-inch vapor valve comes with male NPT threads or a TTMA flange for installation in conventional 16- or 20-inch manholes. Also available as an option, is a Betts Vapor Vent Replacement Kit Hood

Adaptor, to make replacing an existing Betts unit, with an EBW unit, as simple as possible.

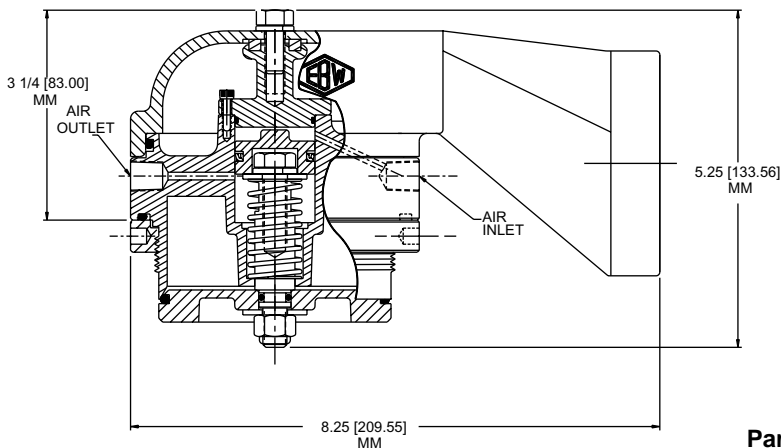
Features

- Lightweight aluminum body and hood
- Fluorocarbon seal
- TTMA Specifications

Total Protection from the Elements



880-343-01



880-345-01

Part no.	Style	Size		Lbs.	Kgs.
		in.	mm.		
880-341-01	Flanged w/o hood	3.50	88.9	4.00	1.8
880-342-01	Threaded w/o hood	3.50	88.9	3.25	1.5
880-343-01	Flanged w/hood			5.0	2.27
880-344-01	Vent w/o hood or flange			4.0	1.81
880-345-01	Threaded w/ hood			4.2	1.91
90067	Kit Hood adaptor			-	-

Hose Tube Doors

Total protection from the elements is what you get with EBW's heavy-duty Hose Tube Door. Beyond durable, this door withstands rusting, rugged use, and continuous road wear. The cap closes securely and can be used with a padlock for theft protection. All three sizes are available plain or cast

with the EBW logo or your Customized Logo. Call EBW for pricing and lead time.

Features

- Cast aluminum frame and cap
- Spring steel, chrome plated hardware
- Nylon bushing
- Name embossed upon request

Total Protection from the Elements



Part No.	Style	Size		Lbs. Kg.	
		in.	mm.		
784-300-03	plain	6.00	152.4	3.00	1.36
784-406-03	plain	7.00	177.8	3.50	1.59
784-400-03	plain	8.00	203.2	4.00	1.81

Petro-Dial

Eliminate the possibility of product mixing and contamination with EBW's Petro-Dial. By using API color-coded labeling, Petro-Dial indicates tank contents at a glance, ensuring proper unloading at delivery point. Just attach one dial to each API

Loading Valve and turn it to represent the correct fuel. The dial locks securely, yet is easily changed when the tank's contents change. Fuels indicated are Regular (REG, white), Diesel (D2, yellow), Regular Kneeled (RNL, blue), Super No lead (SNL,

red), and Other (OTHER, black).

Features

- API color-coded

API color-coded Labeling



Part no.	Lbs.	Kg.
880-227-01	0.44	.20

Product Drop Elbows

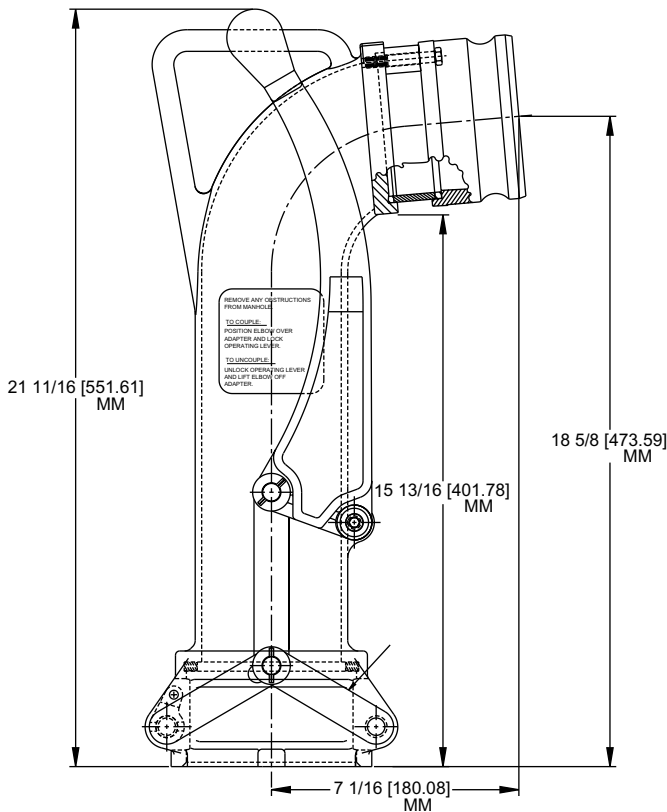
This durable 22" Tall Product Elbow was designed for those Deep Tank Burial applications and has a high flow rate due to the unrestricted flow pattern. It fits all 4" top seal adaptors. It can also be ordered with a variety of different adaptors to meet any requirements. Its single four bolt flange design allows for easy replacement of adaptors over competitive threaded styles, and is

designed for extremely easy on and off coupling due to aluminum bronze alloy locking cams.

Features

- Lightweight Cast Aluminum
- Four bolt flange pattern
- Fits all 4" top seal adaptors
- Protective base shield
- Unique cam locking handle for easy on/off coupling
- 22" tall for deep tank burial applications

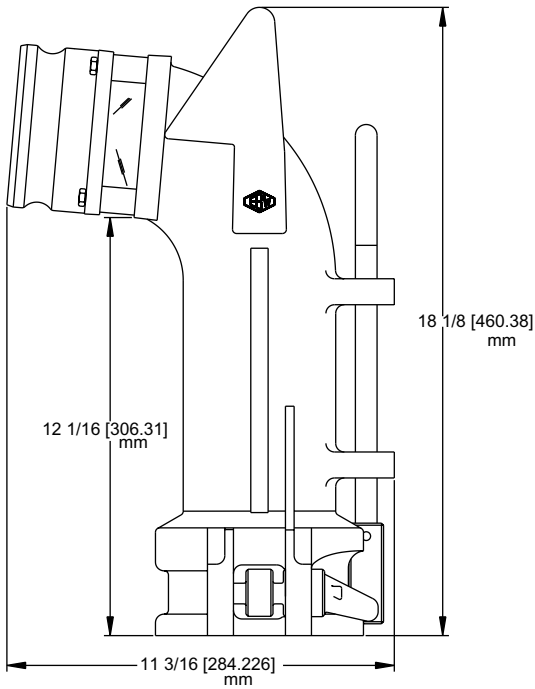
22" for Deep Burial Applications



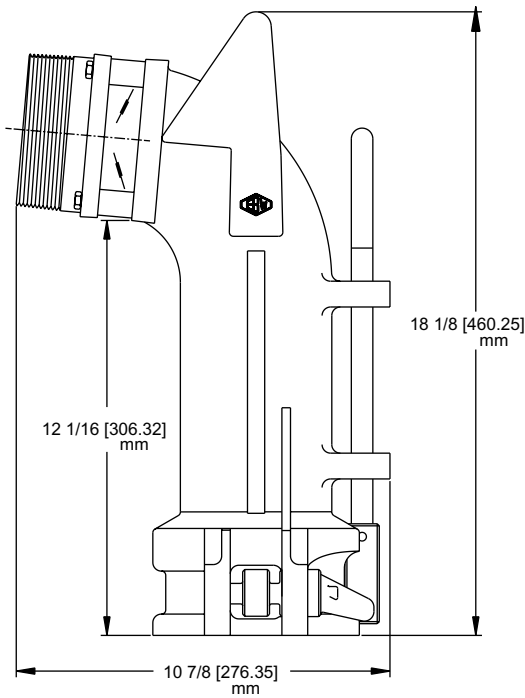
**880-493-02
MAX Flow
Delivery Elbow**

Part No.	Description	Lbs.	Kg.
880-493-01	Product Elbow Dual Point-No adaptor	12.3	5.58
880-493-02	4" Cam & Groove Adaptor w/Sight Glass	13	5.9
880-493-03	3" Cam & Groove Adaptor w/Sight Glass	12.6	5.72
880-493-04	4" NPT Adaptor w/Sight Glass	13	5.9
880-493-05	3" NPT Adaptor w/Sight Glass	12.6	5.72

High Flow Rate



880-455-01



880-455-05

Part No.	Size	Description	Lbs.	Kg.
880-450-01	-	Body only	13 .75	6.24
880-455-01	4"	4" Male Cam/Groove w/ S. G.	16	7.26
880-455-02	3"	3" Male Cam/Groove w/ S. G.	16	7.26
880-455-03	3"	3" NPT Adaptor No S. G.	16	7.26
880-455-04	3"	3" NPT Adaptor w/ S. G.	16	7.26
880-455-05	4"	4" NPT Adaptor w/ S. G.	16	7.26

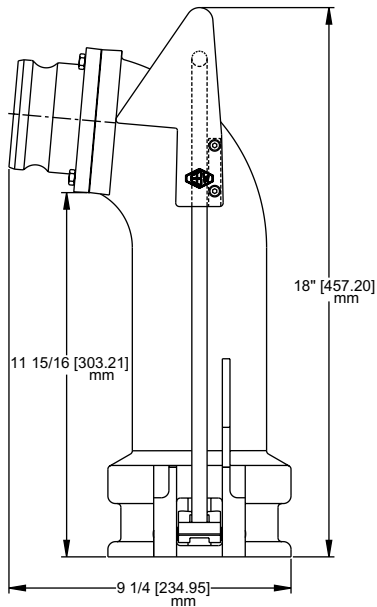
Dual Point Vapor Recovery Elbows

This durable cast aluminum elbow ensures complete vapor recovery for dual point systems, and can be ordered with a variety of different adapters to meet any requirement. The simple four bolt flange design allows for easy replacement of adapters over competitive

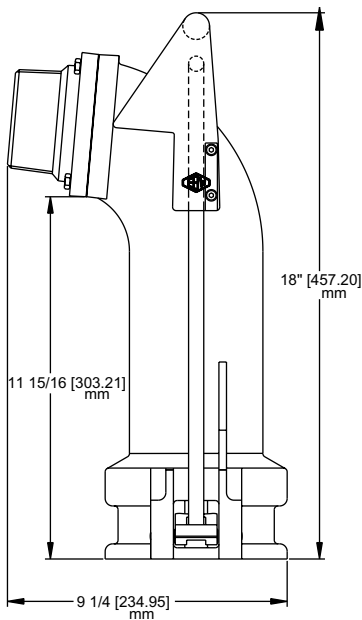
threaded styles. Its low profile design allows for convenient storage and the specially designed quick grip one hand operation handle allows for easy on and off attachment.

Features

- Cast aluminum
- Compact, low profile design
- Four bolt flange pattern
- Protective base shield



880-465-01



880-465-02

Part No.	Size		Description	Lbs.	Kg.
	in.	mm.			
880-460	-	-	Body only	11	4.99
880-465-01	3	76.2	3" Male Cam/Groove	12.38	5.62
880-465-02	3	76.2	3" Male NPT Adaptor	12.38	5.62

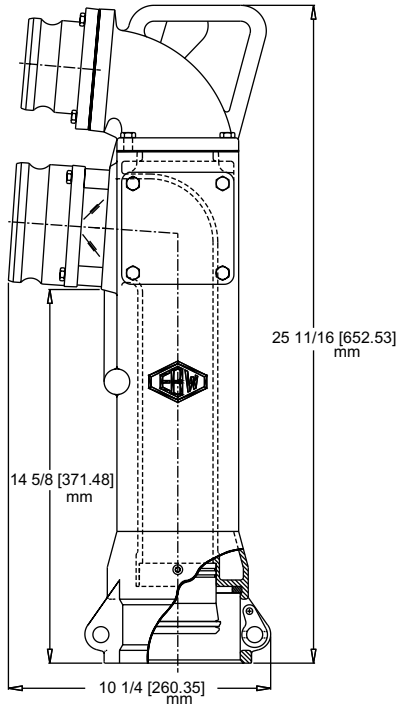
Coax Delivery Elbows

EBW's new Longer Coaxial Delivery Elbow was designed to accommodate the needs of the tank truck industry. The Longer Elbow is made of durable light weight cast aluminum. The Elbow connects to the

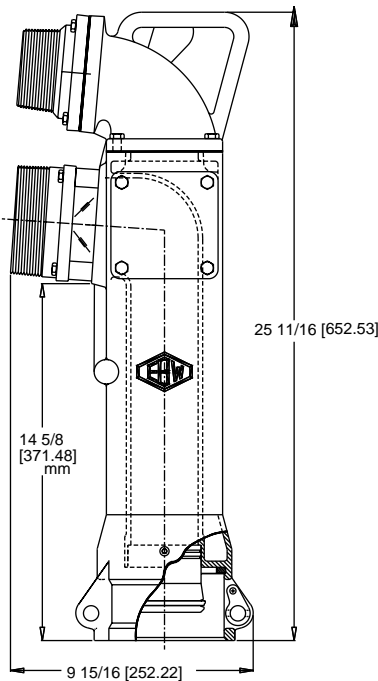
product line and vapor recovery line at the same time, allowing for single point drop and vapor recovery. The new longer elbow meets stage 1 & 2 vapor recovery standards.

Features

- Cast Aluminum
- 4" product line inlet (male cam & groove adapter)
- 3" vapor line outlet (male cam & groove adapter)
- Unique cam locking handle for easy on/off coupling
- Accommodates all coaxial drop tube adapters
- Four bolt flange pattern vs. threaded



880-490-01



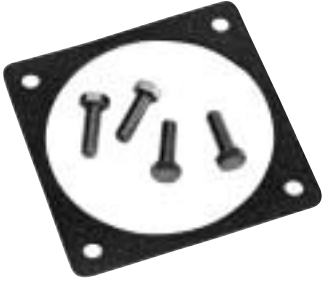
880-490-02

Part No.	Size	Description	Lbs.	Kg.
880-490-01	4" x 3"	Over & under tall 4" x 3" Cam & Groove	22.0	9.98
880-490-02	4" x 3"	Over & under tall 4" x 3" NPT	22.0	9.98
880-491-01	4" x 3"	Side by side 4" x 3" Cam & Groove	22.0	9.98
880-495-01	-	Body Only	18.5	8.39

Attachments

All items listed are optional and need to be ordered separately.

Gasket Kits



<u>Part No.</u>	<u>Weight</u>
880-248-01	6 oz./17kg.

Sight Glass Kit



<u>Part No.</u>	<u>Weight</u>
880-249-01	13 oz./37kg.

2" Cam & Groove Adaptor



<u>Part No.</u>	<u>Weight</u>
880-395-01	1 lb. 1 oz./48kg.

3" Cam & Groove Adaptor



<u>Part No.</u>	<u>Weight</u>
880-396-01	1 lb. 3 oz./54kg.

4" Cam & Groove Adaptor



Part No.	Weight
880-284-01	1 lb. 7 oz./ .65kg.

3" NPT Male Adaptor



Part No.	Weight
880-397-01	1 lb. 7 oz./ .65kg.

4" NPT Male Adaptor



Part No.	Weight
880-289-01	1 lb. 8 oz./ .68kg.

Emergency Valves

EBW's Emergency Valves now make product handling safer. The emergency valve has a shear groove that meets 49 CFR 178.345-8. The seat area of the valve is located inside of the tank shell as required by DOT regulations.

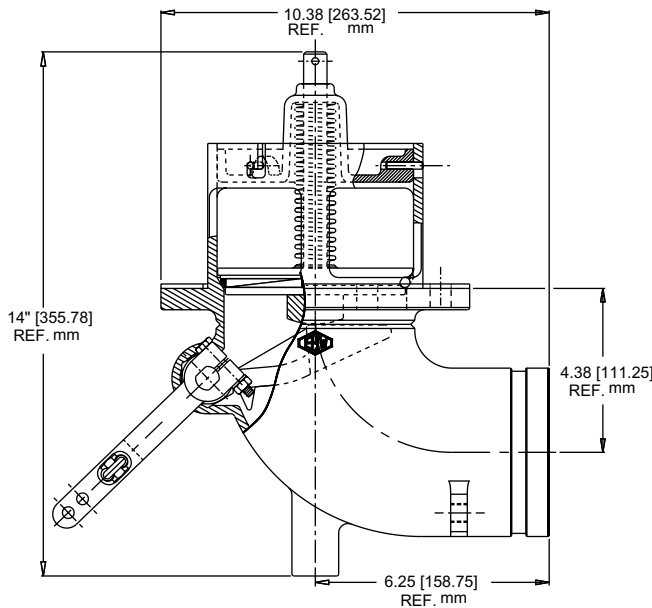
The valve gives you the advantage of a faster flow rate while fitting a standard 4" TTMA sump. The high flow rate is established by a full opening throat area. Emergency valves are available in 90 degree

elbow type or straight type, 4" TTMA Flanges or victaulic outlet, and mechanical or air assisted.

Features

- High Flow Rate
- Fits Std 4" TTMA Sump
- Shear section per TTMA, RP84-92 and meets DOT 49 CFR 178.345-8
- Force ratings from TTMA RP86-92
- Shear Groove meets DOT 406 requirements
- Optional External Air Cylinder available
- Available in victaulic or flanged version
- Fluorocarbon O- Ring

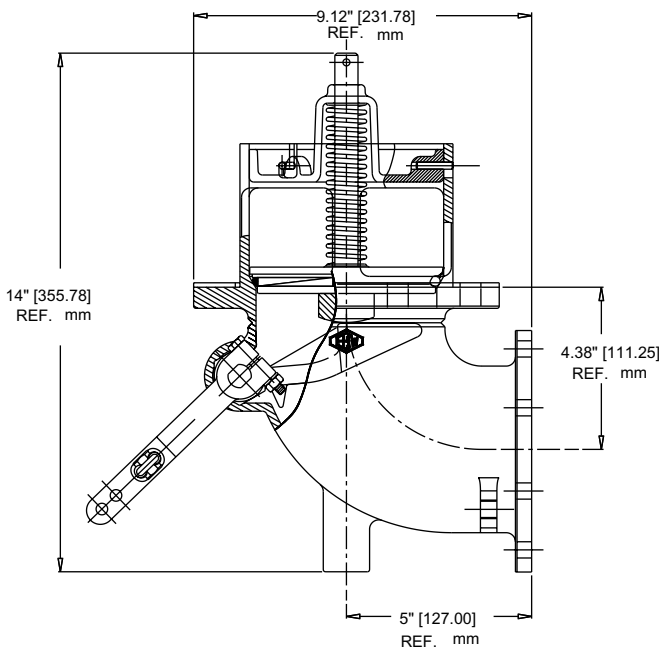
Mechanically Operated 90 Degree Emergency Valves



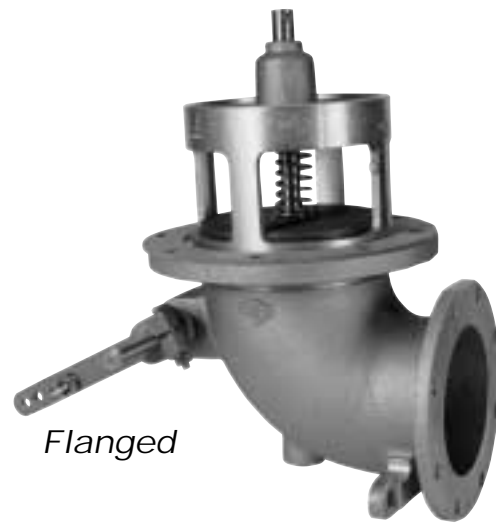
880-430-01



Victaulic



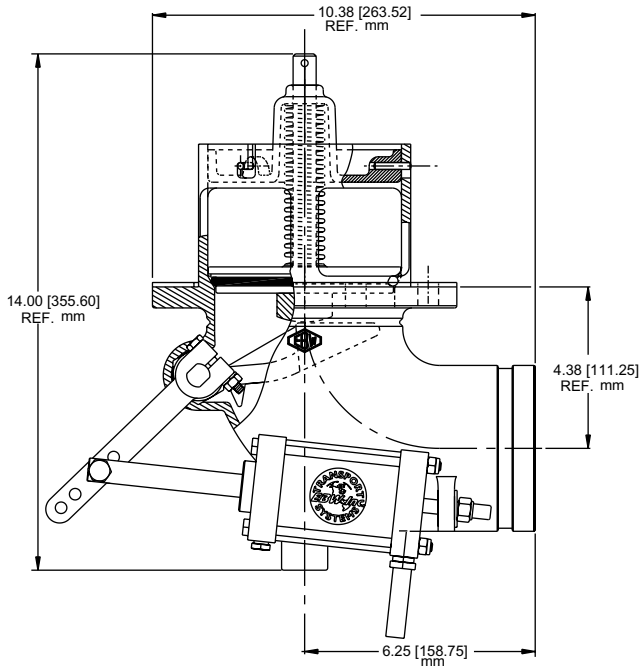
880-431-01



Flanged

Part No.	Description	Lbs.	Kg.
880-430-01	4" Std/ seal Victaulic outlet	11.0	4.99
880-431-01	4" Std/ seal Flanged outlet	11.0	4.99

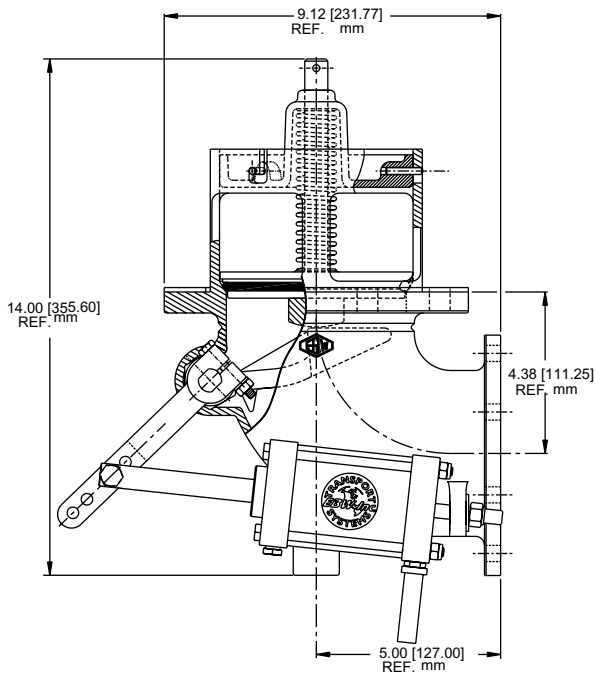
Air Assisted 90 Degree Emergency Valves



880-432-01



Victaulic



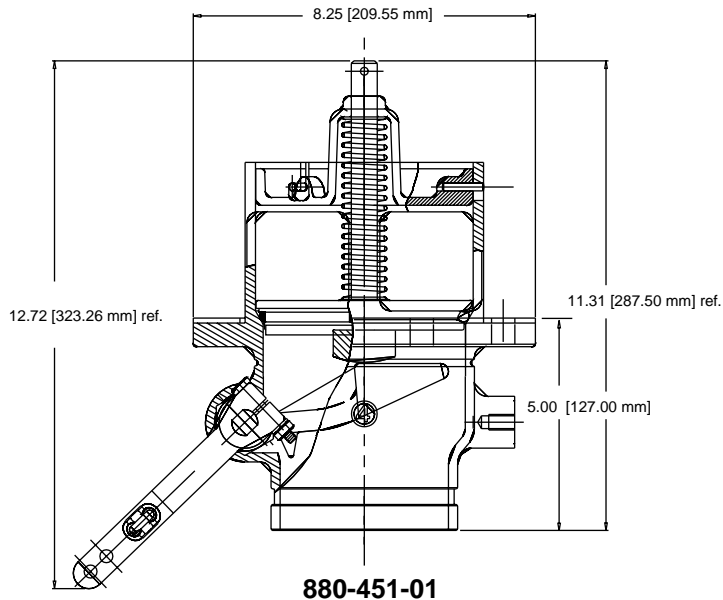
880-433-01



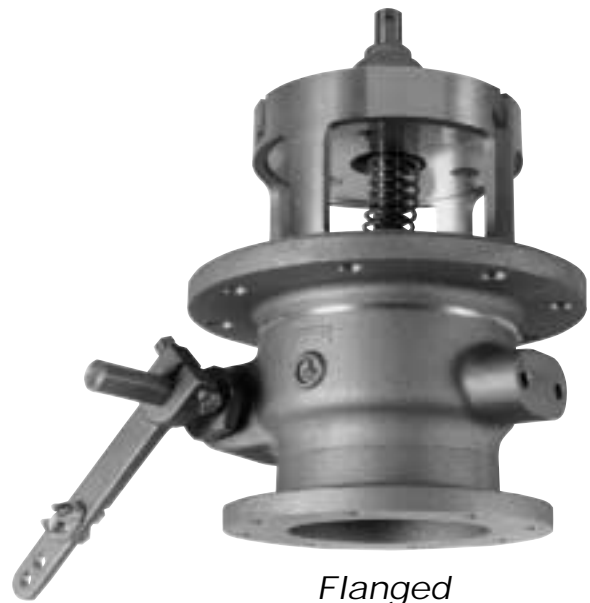
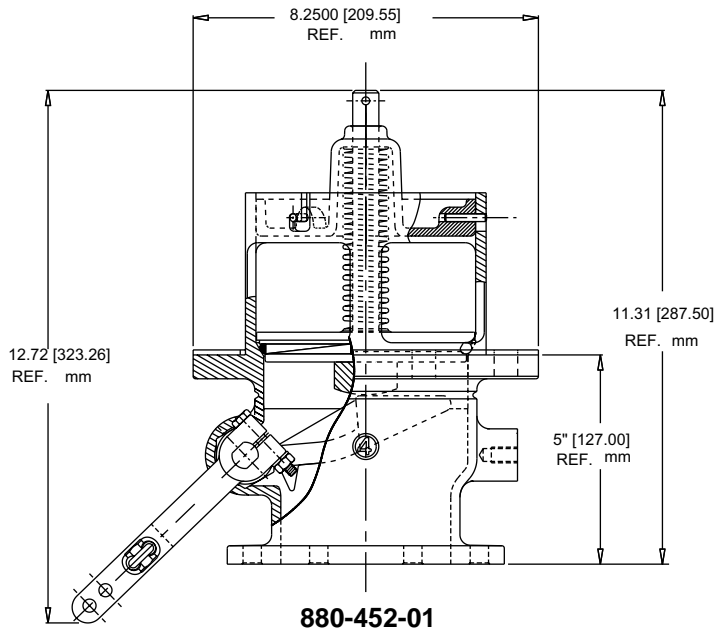
Flanged

Part No.	Description	Lbs.	Kg.
880-432-01	4" Std/ seal victaulic outlet w/ external air cylinder	13.0	5.90
880-433-01	4" Std/ seal flanged outlet w/ external air cylinder	13.0	5.90

Straight Emergency Valves



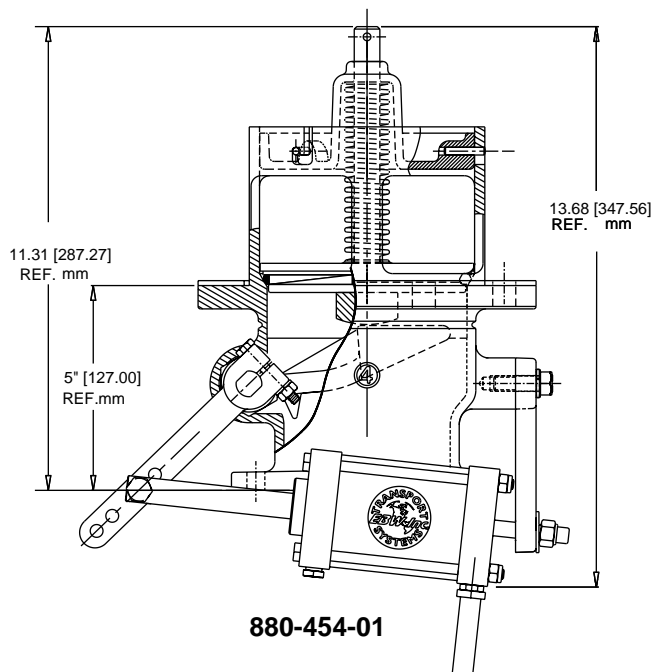
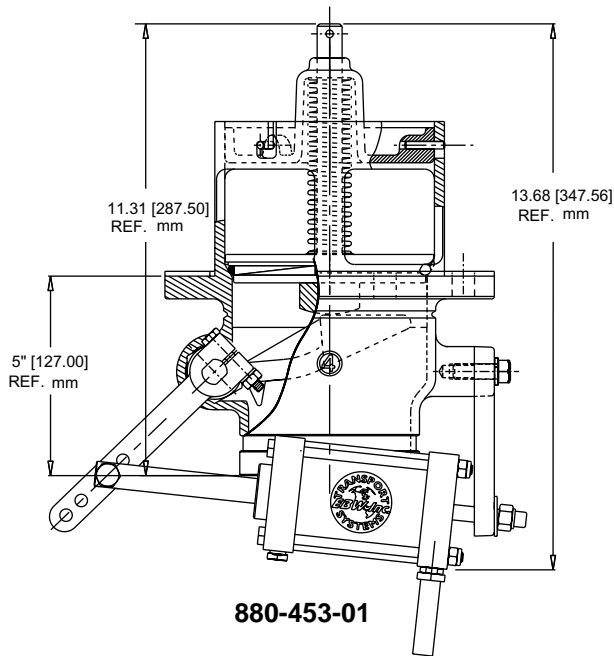
Victaulic



Flanged

Part No.	Description	Lbs.	Kg.
880-451-01	4" Victaulic outlet	9.6	4.35
880-452-01	4" Flanged outlet	10.4	4.71

Air Assisted Straight Emergency Valves



Part No.	Description	Lbs.	Kg.
880-453-01	Victaulic outlet w/ air cylinder	13.6	6.17
880-454-01	Flanged outlet w/ air cylinder	14.6	6.62

Speciality Items

Bulk Fueling Nozzle

EBW's Automatic Bulk Fueling Nozzle is an extra heavy duty high flow gpm fuel dispensing nozzle designed for bulk fueling operations such as: marine, truck or bus dispensing or home fuel oil delivery. This nozzle comes complete with automatic venturi shut-off and a dual position, hold-open mechanism.

Features

- Model 415 is designed with extra large hand opening to accommodate gloves or mittens.
- Check valve is in nozzle body, not the spout, for inexpensive, fast spout replacement.
- Self-adjusting stem packing. No field adjustment is required.
- Automatic shut-off, with dual poppets for easy opening.
- Two position hold- open latch.
- Right angle design allows nozzle to "fit" close to walls and corners.
- Cast-in protective standoffs provide durability with rough usage.



Part No.	Lbs.	Kg.
415-110-01	7.3	3.31

Side Seal Adaptor

EBW's side seal adaptor was designed to give flexibility to top seal drop elbows. Your 4" top seal delivery elbow can now be used on a side 4" seal fill adapter. You don't have to bring a separate side seal elbow which reduces cost and reduces the number

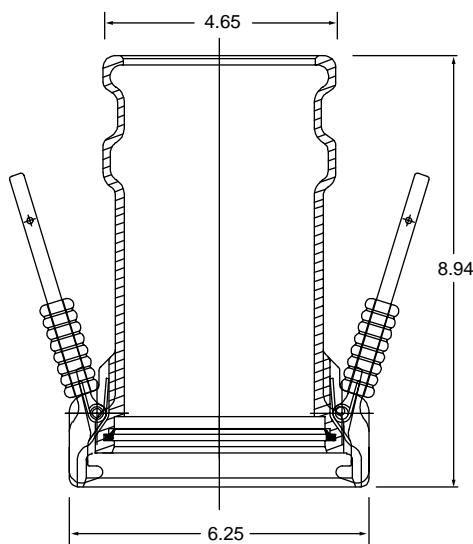
of fittings required on your truck. Now you can carry the EBW side seal adapter and be ready for any situation.

Two lever clamps secure the adapter to the stations side seal fitting and allows a 4" elbow to attach to the

adapter. Special locking rings prevent accidental cam arm release during filling. Cast aluminum, makes it light weight and strong. The specially designed seal gives you the added insurance that no leaks will occur.

Features

- Designed for use with 4" side seal service station fittings
- Light Weight
- Cast Aluminum body
- Special innovative seal design
- No separate side seal elbow to transport
- Locking rings to prevent accidental cam arm release during filling



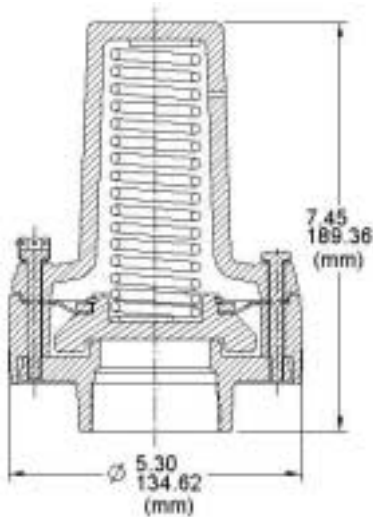
Part No.	Lbs.	Kg.
880-445-01	10.0	4.58

Bulk Pneumatic Pressure Relief Valves

EBW Transport Systems now offers Bulk Pneumatic Pressure Relief Valves for use on pneumatic tank trailers. Two models are available - a 15 lbs. pressure relief valve for the trailer and a 18 lbs. relief valve for the blower. Both models offer a unique 3 piece body that reduces ice build-up, offers high air flow and ease of maintenance.

Features

- 2" Female NPT mount
- Tamper proof seal
- Reinforced silicone rubber diaphragm - rated -60^o to +400^o F
- Non-galling zinc-aluminum base
- Unique 3 piece body reduces ice build-up, offers high air flow and ease of maintenance



Non-galling zinc-aluminum base

Unique 3 piece body reduces ice build-up, offers high air flow and ease of maintenance

Part No.	Description	Lbs.	Kg.
881-224-01	Pressure Relief Valve - 15 lb.	6.4	2.90
881-225-01	Pressure Relief Valve - 18 lb.	6.4	2.90
881-226-01	Pressure Relief Valve - 20 lb.	6.4	2.90
90071	Relief Valve service Kit	-	-

Cam and Groove Adaptors

Hose shank end bands to hose. The coupler comes in two sizes for use with most hose configurations.

Features

- Heat-treated, aluminum alloy body and brass probe
- Forged bronze cams and stainless steel pins
- Other sizes available consult factory

Adaptors



Part No.	Description	Lbs.	Kg.
774-212-15	1.5" Cam and Groove Dust Cap	.8	.36
774-212-20	2" Cam and Groove Dust Cap	1.25	.57
774-212-30	3" Cam and Groove Dust Cap	1.4	.64
774-212-40	4" Cam and Groove Dust Cap	1.9	.86
774-311-30	4" Male C & G x 3" Hose Shank	2.8	1.27
774-311-40	4" Male C & G x 4" Hose Shank	3.04	1.38
774-403-01	4" Female C & G 4" Hose Shank	2.5	1.13
774-402-01	4" Female C & G 3" Hose Shank	2.3	1.04
774-225-30NPT	4" Cam & Groove x 3" Female NPT	.8	.36
774-225-40NPT	4" Cam & Groove x 4" Female NPT	1.6	.73

EBW Transport Solutions

EBW Transport Systems Cross Reference Guide

	EBW	Civacon	Emco Wheaton	Bayco
Bottom Loading Adaptors				
Non-Openable	880-440-01	866-0055	F-500-003	5001
Short Stroke	880-422-01	861-0400	F-501-003	
			F-502-001	
Short Stroke w/S.G.	880-427-01	861SG		
Female Gravity Drop Adaptors				
4" API	880-330-01	871-B-0076		
Buna-N Gasket for Hose end	774-202-04	H-8347-M		
Male Gravity Drop Adaptors				
3" Male Cam Groove	880-410-01	871-A-0075	F459-006	
4" Male Cam Groove	880-411-01	871-A-0074	F459-007	
Vapor Check Valves				
4" NPSM Thread Poppeted	301-300-02	611-T-1620	F529-001	
4" NPSM Thread No Poppet	303-444-04	610-T-0610	F529-002	
Flanges Vapor Check Valves				
Poppeted w/S.G.	302-300-01	633-LVH-1950	F530-010	
High Flow Vapor Check Valves				
4" Poppeted	880-448-01			VR4000
Vapor Caps				
Nylon with Chain	304-200-02		F532-001	
Air Interlock valves				
1/4" - 1" Button	880-150-01	100-0001	F527-002	
1/4" six way 1" Button	880-256-01	101-0002	F-527-003	
			F528-001	
Dust Cap				
4" API Dust Cap	880-403-01	873-0070	F499-001	5000-24
		874-0874		
Air Operated Sequential Vapor Vent Valves				
Flanged w/ Hood	880-343-01	1985-1201	F592-001	
Vent Valve Only	880-344-01	1986-1301	F592-001	
Vapor Return Hose Couplers				
3" x 3" w/probe	774-320-01	633-CV-6065		VRC3000
4" x 3" w/probe	774-320-02	633-CV-6070	F800-002	VR403CS
		633-CPP-6051	F800-001	
		633-CPV-6053		
4" x 4" w/probe	774-320-03	633-CV-6075		
		633-CPP-6051		



Sales Desk (800) 207-9579 • Sales Fax (800) 475-4329 • Phone (213) 755-1671

2814 McCracken Avenue, Muskegon, MI 49441 • Fax (213) 755-7201 • www.ebw.com



©2002 EBW Inc. Form No 6000 6/02